

job name:   
 type:

# 18"/26" wāf.r™ spec sheet 90CRI

**material**

**trim ring**

precision CNC spun .063" aluminum. rolled bottom edge for added strength.

**diffuser**

.177" non-glare light matte high transmission acrylic drop lens held in place with allen key set screws recessed into trim ring.

**optics**

**reflector**

.050" aluminum array platform painted high reflectance (>92%) matte white powder coat provides 100% downlight. for uplight, specify under options.

**LED**

custom LED board in 3000K, 3500K, or 4000K 90+ cri standard optional. under normal operating conditions, the LEDs employed are rated for >50,000hrs L70 (6.8K) per IES TM-21 from LM-80 test data. white power cord is standard with other color options listed below.

**driver**

integral, programmable, UL class P, class 2, universal input (120-277v), constant current, 0-10v dimming, 1% minimum dimming level, PF >.9, THD <20%, protections include open and short circuit, overload and over temperature.

**mounting**

5" dia. spun steel canopy in satin white is designed to mount to a 4" octagon junction box (by other). four point vertical suspension of stainless steel cables attach to trim with field adjustable grippers that allow for exact AFF mounting heights. slip ring coupler allows for easy wire connections. optional quadpod to single point cable suspension.

**emergency**

recommend use of inverter (by other). optional WREM: wired for remote EM battery (by other).

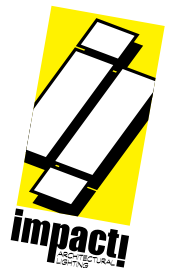


## catalog number

--	--	--	--	--	--

size	CCT	lumens	painting finish	power cord	options
<b>P5518</b> 18" dia X 3" ht	<b>30</b> 3000K	<b>FX</b> 1300 lm	<b>AP</b> anodized paint	<b>WHPC</b> white power cord and canopy	<b>6FT</b> 72" cables
	<b>35</b> 3500K	<b>LO</b> 2550 lm	<b>BS</b> brass	<b>BKPC</b> black power cord and canopy	<b>12FT</b> 144" cables
	<b>40</b> 4000K	<b>HI</b> 4100 lm	<b>BU</b> blue	<b>SBPC</b> silver braid power cord and white canopy	<b>10UP</b> 10% uplight
		<b>CL</b> xxxx lm custom lumens consult factory	<b>FB</b> flat black		<b>QPD</b> Quadpod hanging system choose suspension length above when selecting -QPD
<b>P5526</b> (2ft) 26" dia X 5" ht	<b>30</b> 3000K	<b>FX</b> 2600 lm	<b>GM</b> gun metal		<b>WREM</b> wired for remote EM battery pack (by other) (see note above)
	<b>35</b> 3500K	<b>LO</b> 5100 lm	<b>MB</b> military blue		<b>ELD</b> EldoLED*
	<b>40</b> 4000K	<b>HI</b> 8300 lm	<b>MW</b> matte white		<b>LUT</b> Lutron*
		<b>HX</b> 9700 lm	<b>OR</b> orange		*consult factory
		<b>CL</b> xxxx lm custom lumens consult factory	<b>RD</b> red		
			<b>SB</b> satin black		
			<b>SS</b> satin silver		
			<b>TG</b> textured gray		
			<b>YO</b> yellow		

**premium finish**  
**RAL** specify RAL#



job name:   
 type:

## 38"/48" wāf.r™ spec sheet 90CRI

### material

#### trim ring

precision CNC spun min. .063" aluminum. rolled bottom edge for added strength.

#### diffuser

.177" non-glare light matte high transmission acrylic drop lens held in place with allen key set screws recessed into trim ring.

### optics

#### reflector

.050" aluminum array platform painted high reflectance (>92%) matte white powder coat provides 100% downlight. for uplight, specify under options.

### LED

custom LED board in 3000K, 3500K, or 4000K 90+ cri standard. under normal operating conditions, the LEDs employed are rated for >50,000hrs L70 (6.8K) per IES TM-21 from LM-80 test data. white power cord is standard with other color options listed below.

### driver

integral, programmable, UL class P, class 2, universal input (120-277v), constant current, 0-10v dimming, 1% minimum dimming level, PF >.9, THD <20%, protections include open and short circuit, overload and over temperature.

### mounting

5" dia. spun steel canopy in satin white is designed to mount to a 4" octagon junction box (by other). four point vertical suspension of stainless steel cables attach to trim with field adjustable grippers that allow for exact AFF mounting heights. slip ring coupler allows for easy wire connections. optional quadpod to single point cable suspension.

### emergency

recommend use of inverter (by other). optional WREM: wired for remote EM battery (by other).

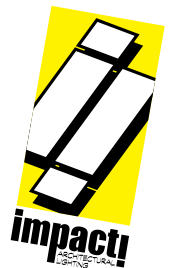


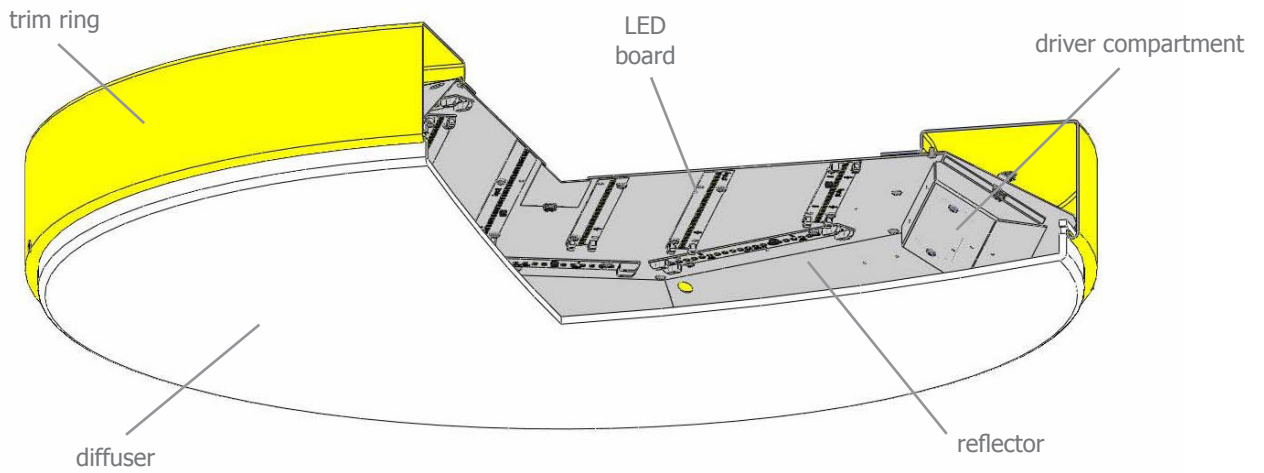
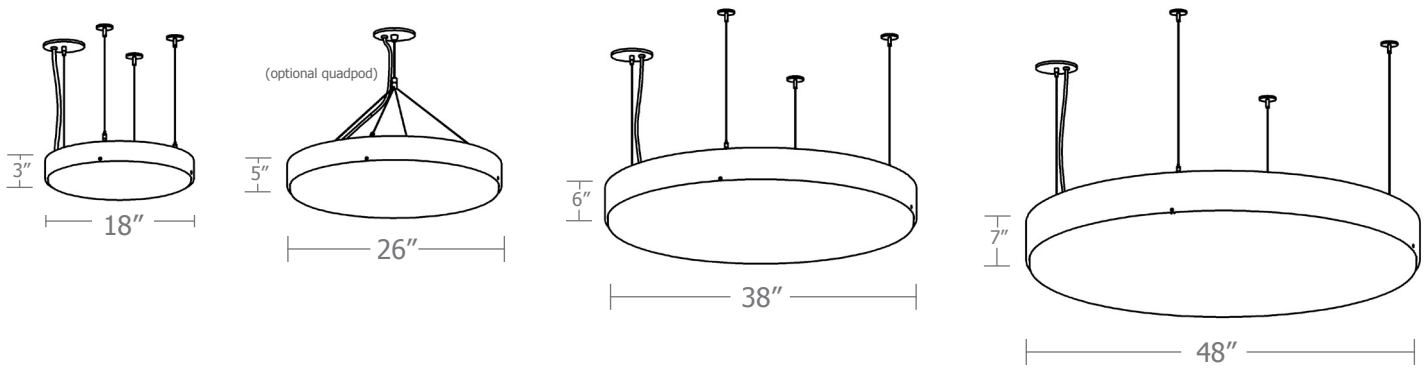
## catalog number

--	--	--	--	--	--

size	CCT	lumens	painting finish	power cord	options
<b>P5538</b> (3ft) 38"dia X 6"ht	<b>30</b> 3000K	<b>FX</b> 5150 lm	<b>AP</b> anodized paint	<b>WHPC</b> white power cord and canopy	<b>6FT</b> 72" cables
	<b>35</b> 3500K	<b>LO</b> 10200 lm	<b>BS</b> brass	<b>BKPC</b> black power cord and canopy	<b>12FT</b> 144" cables
	<b>40</b> 4000K	<b>HI</b> 16600 lm	<b>BU</b> blue	<b>SBPC</b> silver braid power cord and white canopy	<b>10UP</b> 10% uplight
		<b>HX</b> 19400 lm	<b>BZ</b> bronze		<b>QPD</b> Quadpod hanging system choose suspension length above when selecting -QPD
		<b>CL</b> xxxx lm custom lumens consult factory	<b>CP</b> champagne		<b>WREM</b> wired for remote EM battery pack (by other) (see note above)
<b>P5548</b> (4ft) 48"dia X 7"ht	<b>30</b> 3000K	<b>FX</b> 7700 lm	<b>FB</b> flat black		<b>ELD</b> EldoLED*
	<b>35</b> 3500K	<b>LO</b> 15300 lm	<b>GM</b> gun metal		<b>LUT</b> Lutron* *consult factory
	<b>40</b> 4000K	<b>HI</b> 25000 lm	<b>MB</b> military blue		
		<b>HX</b> 29100 lm	<b>MW</b> matte white		
		<b>CL</b> xxxx lm custom lumens consult factory	<b>OR</b> orange		

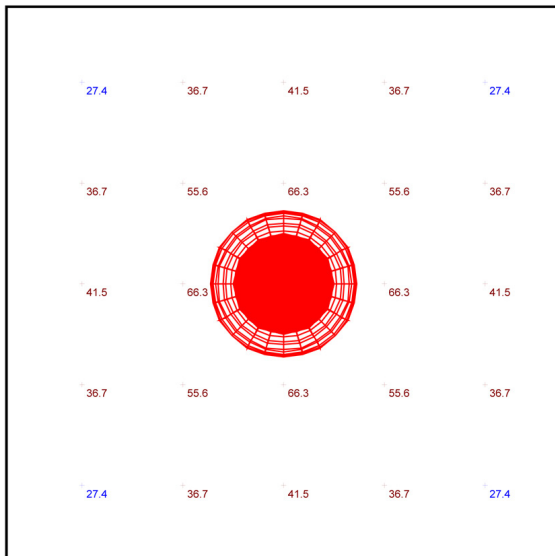
premium finish  
 RAL specify RAL#





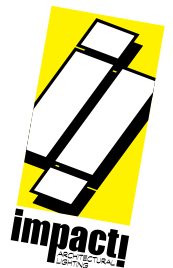
performance

Statistics						
Description	Symbol	Avg	Min	Max/Min	Avg/Min	Max
waf.r	+	45.5 fc	27.4 fc	2.9:1	1.7:1	80.8 fc



Plan View  
Scale - 1" = 4ft

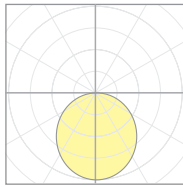
- 22' x 22' x 22'H space
- 80/50/20 reflectances
- bottom of fixture at 14' aff
- FC readings at 2.5' aff
- layout conducted using P5548 HX lumen package (29100 delivered lumens)



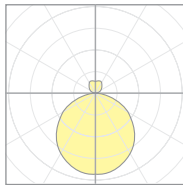
# Calculation Table

The application of a Light Loss Factor is required to:

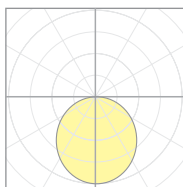
- match the lumen output for the power module specified
- incorporate the increased lumen output due to LED/Driver upgrades



18682  
P5526



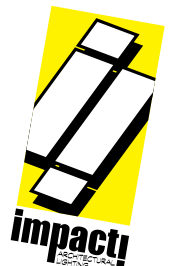
18689  
P5538-10UP



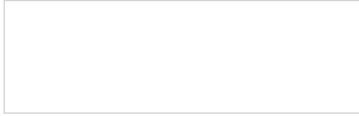
18693  
P5548

Cat No	Delivered* Lumens	Watts 120V / 277V	IES File #	LLF to be applied
<b>P5518 FX</b>	1300	15	<b>20153</b> direct	.38
			<b>20152</b> 10UP	.35
<b>P5518 LO</b>	2550	29	<b>20153</b> direct	.74
			<b>20152</b> 10UP	.69
<b>P5518 HI</b>	4100	48	<b>20153</b> direct	1.19
			<b>20152</b> 10UP	1.11
<b>P5526 FX</b>	2600	30	<b>18681</b> direct	.61
			<b>18685</b> 10UP	.38
<b>P5526 LO</b>	5100	59	<b>18681</b> direct	1.20
			<b>18685</b> 10UP	.75
<b>P5526 HI</b>	8300	96	<b>18681</b> direct	1.25
			<b>18685</b> 10UP	1.21
<b>P5526 HX</b>	9700	112	<b>18681</b> direct	1.46
			<b>18685</b> 10UP	1.42
<b>P5538 FX</b>	5150	59	<b>18686</b> direct	.77
			<b>18689</b> 10UP	.70
<b>P5538 LO</b>	10200	118	<b>18686</b> direct	1.53
			<b>18688</b> 10UP	1.40
<b>P5538 HI</b>	16600	192	<b>11208</b> direct	1.20
			<b>18689</b> 10UP	1.40
<b>P5538 HX</b>	19400	224	<b>11208</b> direct	1.40
			<b>18689</b> 10UP	1.63
<b>P5548 FX</b>	7700	89	<b>18692</b> direct	.86
			<b>19172</b> 10UP	.45
<b>P5548 LO</b>	15300	177	<b>18692</b> direct	1.70
			<b>19172</b> 10UP	.88
<b>P5548 HI</b>	25000	288	<b>18693</b> direct	1.69
			<b>19172</b> 10UP	1.45
<b>P5548 HX</b>	29100	336	<b>18693</b> direct	1.96
			<b>19172</b> 10UP	1.68

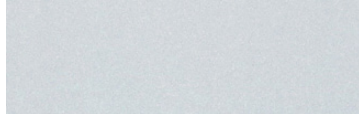
\*delivered lumens based on 4000K, 90+ cri



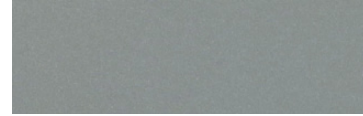
## Powder Coat Paint Finishes



**MW** matte white



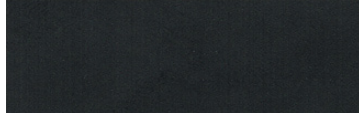
**AP** anodized paint



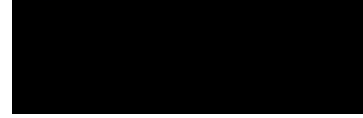
**SS** satin silver



**TG** textured gray



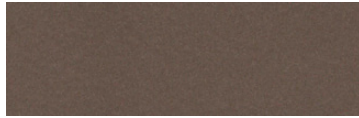
**FB** flat black



**SB** satin black



**CP** champagne



**BZ** bronze



**GM** gun metal



**OR** orange 2011



**BU** blue 5017



**BS** brass



**RD** red 3020



**YO** yellow 1018



**MB** military blue

For accurate color verification, actual finish samples are available upon request.

## Premium Finishes\*



**RAL#**

\*Available on select series. Consult product submittal for availability.

